



 **GAMBER®
JOHNSON**

Very Well Connected™



intella™
PARTS COMPANY LLC



Tablet mounted using a dual clam shell with a 3" arm and small plate
7160-0420

RUGGED MOUNTING SOLUTIONS

Gamber-Johnson is a leading manufacturer of rugged mounting solutions for computers

We offer a variety of ergonomic mounts that can be configured for your specific material handling vehicle. We have an assortment of products designed to securely mount fixed vehicle computers, tablets, displays, laptops, keyboards, mobile handheld scanners, and safety lights.

Whether you want to mount your device horizontally on the overhead guard leg, vertically from the overhead guard, or anywhere else, Gamber-Johnson has a solution that will fit your needs.

All Gamber-Johnson products are tested to ensure they work flawlessly, even in the most rugged environments. The mounts are made to be durable and can hold a system weighing more than 20 lbs horizontally off the overhead guard leg without a problem.

Let us help you pick out your mounting solution

Every day, we work with people like operations managers, warehouse managers, and IT managers to pick out the right solution for their unique material handling needs. Send us an email or drop us a line and we'll help you come up with a solution that fits your budget, time line, and vehicles.



Tablet mounted in a TabCruzer Mini
7160-0774

CLAM SHELL MOUNTING SYSTEMS

Docking station mounted using a dual clam shell **7160-0366** on a roll form bracket **7160-0418**

Clam Shells

Gamber-Johnson uses the clam shell motion attachment to secure your tablet, printer, handheld scanner, or monitor directly to your overhead guard leg.

In addition to securely mounting your device, clam shells provide 90 degrees of tilt, meaning you can adjust your device flat back, straight up, and in any position in between. For even more articulation, you can add another clam shell.

All clam shells have AMPS, NEC, VESA 75mm, and Gamber-Johnson's 2" x 4" hole pattern options for attaching your device on a mounting system.

Single clam shell

Easily attach your device, dock, cradle, or interface plate. Once attached, you can adjust the angle of your device up or down to create a more ergonomic solution.

Dual clam shell

Increase your tilt, swivel, and rotation options. With the addition of the second clam shell, you can not only tilt your device up or down, but you can angle your screen slightly back towards the overhead guard leg so you can see it better.

Dual clam shell with a 3" arm

This mount features a 3" arm between the two clam shells which helps to bring the device closer to you. The arm adds an additional swivel point allowing you to position the device at the optimal ergonomic position.



7160-0357
Clam shell with small backer plate



7160-0370
Clam shell with large backer plate



7160-0366
Dual clam shell with small backer plate



7160-0367
Dual clam with large backer plate



7160-0420
Dual clam shell with 3" arm - small backer plate



7160-0421
Dual clam shell with 3" arm - large backer plate

Which size backer plate do you need?

The width of the overhead guard leg will determine what size you will use. The smaller backer plate is recommended for overhead guard leg width ranging from 1.5" to 2.5". The larger backer plate is recommended for overhead guard leg width ranging from 2.5" to 5.0".

Computer mounted using a roll formed bracket **7160-0418** and a dual clam shell with 3" arm **7160-0420**



BRACKETS, CLAMPS, & OVERHEAD GUARD MOUNTS

Horizontal extension bracket

Display your device up to 15" horizontally off the overhead guard leg.

It's a superb solution for mounting heavier computers and keyboards. Can be used with the clam shell with the small plate, dual clam shell with small plate, dual clam shells with 3" arm with small plate, or barcode/handheld computer mounts.



7160-0363
Horizontal extension bracket

Roll formed brackets

Mount on a roll formed overhead guard leg.

Can be used with the clam shells (small or large), dual clam shells (small or large), dual clam shell with 3" arm (small or large), barcode/handheld computer mounts, or the horizontal extension bracket.



7160-0418
Roll formed bracket



7160-0814 (new)
Custom roll formed bracket for special Jungheinrich/CAT models



7160-0815 (new)
Roll formed bracket for Linde forklift models EV-30 and EV-40

Tube clamp

Compatible with 2", 2.5" or 3" diameter tube

Mount on a tube style overhead guard leg.

The tube clamp can be used with small or large clam shells, dual clam shells, dual clam shells with 3" arm, barcode/handheld computer mounts, or the horizontal extension bracket. The tube clamp allows the clam shell to be mounted in a horizontal or vertical orientation.



7160-0561
2", 2.5", or 3" diameter tube clamp



Computer mounted using an overhead guard mount **7160-0368**

Overhead Guard Mounts

Mount your device overhead and out of the way.

The overhead guard mounts are the most popular Gamber-Johnson mounting options for material handling. They all come with at least one clam shell so you can adjust the angle of your device.

Short with a single clam shell

Best solution when you need to mount your device closer to the ceiling of the vehicle.

Short with a dual clam shell

Mounts the device close to the ceiling, but has a second clam shell that gives you additional device articulation.

Extended with a single clam shell

Brings your device further down 8" down off the overhead guard for easier viewing.



7160-0585
Short overhead guard mount with single clam shell



7160-0586
Short overhead guard mount with dual clam shell



7160-0368
Extended overhead guard mount with clam shell

UNIVERSAL MOUNTING CRADLES



Your Gamber-Johnson products are assembled, packaged, and shipped from our plant in Wisconsin. This typically takes only 72 hours - one of the fastest turn-around times in the industry.



Tablet mounted using a NotePad V-LT with cam back clips
7160-0402-03



7160-0402-03
NotePad V-LT universal computer cradle with cam back clips



7160-0402-01
NotePad V-LT universal computer cradle with zero edge clips



7160-0774
TabCruzer Mini - universal tablet cradle

Universal Cradles

Securely mount your tablet, notebook, or rugged laptop to your mounting solution in 5 minutes or less.

The NotePad™ V is Gamber-Johnson's universal laptop cradle. It's a heavy-duty extruded aluminum universal cradle that's adjustable to fit just about any laptop.

NotePad V-LT with cam back clips

Fits just about any small laptop or tablet computer. You can easily adjust the cradle to fit any device as small as 6.63" x 8.3" to as large as 8.0" x 11.8". The depth is also adjustable and fits thin computers up to 1.5". It's a light weight unit (only 5.5lbs) but as tough as nails.

NotePad V-LT with zero edge clips

The universal cradle fits smaller laptops, netbooks, and tablets; the zero edge clips will not interfere with control features located close to the edge of the computer. It's adjustable to fit laptops from 7.58" x 8.2" and those as large as 9.33" x 11.8". The depth is also adjustable and fits laptops as thin as 0" to 1.5". It's a light weight unit (only 5.5 lbs) but as tough as nails.

TabCruzer® Mini (new)

This new universal cradle is designed to hold a standard consumer tablet computer between 0.2" and 0.7" thick. It comes with slide clips which easily adjust the cradle to fit a tablet from 6.9" x 4.4" up to 11.2" x 8.2".

Safety Light Brackets

The light bracket attaches to the overhead guard and allows lights to be mounted in multiple orientations. The brackets can be used with overhead guard supports that are 2" to 5" wide. They also provide 4.75" of travel up and down. The clam shell provides articulation that allows lights to be mounted in locations where the mounting surface is at an angle.



7160-0610
Single safety light bracket (fits most brands of safety lights)



7160-0611
Dual safety light bracket (fits most brands of safety lights)



7160-0609
Dual safety light bracket with clam shell (fits most brands of safety lights)



7160-0608
Single safety light bracket with clam shell (fits most brands of safety lights)



Barcode scanner mounted using a **7160-0499-01**

Printer mounted using a **7160-0785**

Barcode and Handheld Computers

Handheld computer mounts attach directly to the overhead guard leg allowing you to keep your wired or wireless device within easy reach.

Upper only mount

Quickly access your device using a slide-and-go motion. The upper section has a forward restraint to protect the IR lens from damage and prevents the trigger from being activated while in motion.

Upper-lower mount

The combination mount has the upper mount plus an adjustable lower section that can be moved into the position you desire.



7160-0499-01
Barcode scanner/mobile computer mount - upper only



7160-0499
Barcode scanner/mobile computer mount - upper and lower

Printer Mounts

Attach a printer mount to your vehicle using a Gamber-Johnson clam shell.

Position the bracket so your printer sits horizontally or vertically. The bracket is designed to not impede paper feed, printer ports, or your power connection.



7160-0793
Honeywell RL4 quick release printer mount system



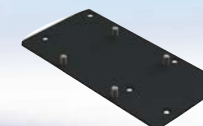
7160-0817
Zebra QLn20 printer bracket



7160-0795
SATO MB410i-W2 printer bracket



7170-0517
SATO MB410i-W2 quick release printer mount system



7160-0785
Datamax O'Neil MP compact 4 Mark II printer bracket



Computer with a keyboard
arm attachment **7160-0550**

OTHER ADD-ONS



Lind power supplies

Power your computer or other peripheral using an isolated power adapter compatible with your DC power source.

- ☐ **15202** 12-32V Panasonic
- ☐ **15203** 20-60V Pansasonic
- ☐ **16078** 20-60V Getac
- ☐ **16079** 12-32V Getac
- ☐ **16411** 12-32V Zebra
- ☐ **16412** 20-60V Zebra



2" tube clamp

Mount any clam shell to a tube-style overhead guard leg 2" in diameter.

- ☐ **15065**



Intermec CV61 interface plate

Mount your CV61 all-in-one computers on any clam shell.

- ☐ **7160-0493**



Quick release mount

Quickly remove any computer or tablet mounted to a clam shell without using tools.

- ☐ **7160-0593**



Keyboard arm

Attach a keyboard to the underside of a clam shell against the overhead guard leg of your forklift.

- ☐ **7160-0550**



Keyboard tablet mount

Combine a keyboard and any Gamber-Johnson docking station/cradle together on your forklift mount.

- ☐ **7160-0799**

PARTNERING WITH

intella[™]
PARTS COMPANY LLC

196 120th Avenue Holland, MI 49424, USA
Phone: 616-796-6638
E-Mail: sales@intellaparts.com
Website: www.intellaparts.com